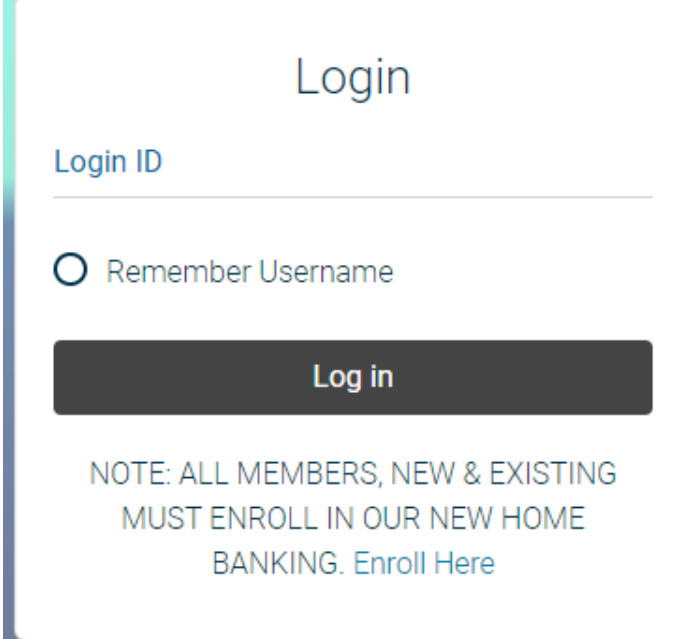


Home Banking Sign Up

Home Banking Walkthrough

Here are the instructions on how to sign up for MS DHS Home banking.

1. Go to <https://bsdc.onlinecu.com/msdhsfcu/#/> or click the link provided on the Credit Union's web page.



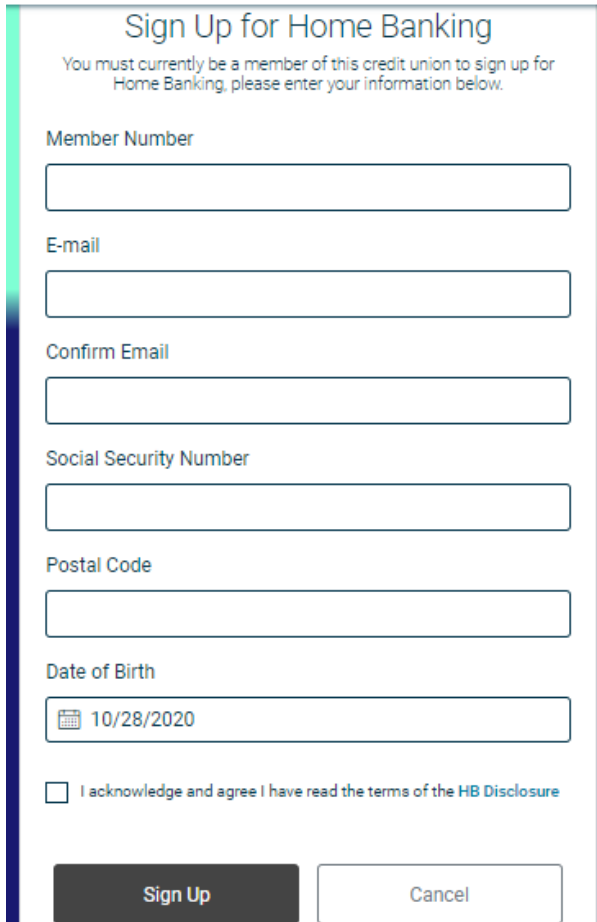
The screenshot shows a login interface with the following elements:

- Header: "Login"
- Input field: "Login ID" with a horizontal line below it.
- Checkbox: "Remember Username" with an unchecked radio button.
- Button: "Log in" in white text on a dark grey rectangular background.
- Text: "NOTE: ALL MEMBERS, NEW & EXISTING MUST ENROLL IN OUR NEW HOME BANKING. [Enroll Here](#)"

2. First time users will need to select "Enroll Here". They will need to enter their member number, email address, social security number, zip code, and birth date. They will then need to click the box to acknowledge the User Agreement and click the box labeled "Sign Up".

Home Banking Sign Up

Home Banking Walkthrough



Sign Up for Home Banking

You must currently be a member of this credit union to sign up for Home Banking, please enter your information below.

Member Number

E-mail

Confirm Email

Social Security Number

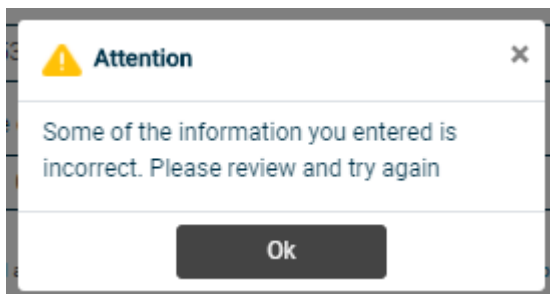
Postal Code

Date of Birth

I acknowledge and agree I have read the terms of the [HB Disclosure](#)

Sign Up Cancel

NOTE: You do not need to have an email address on file with the credit union in order to enroll in home banking, but if you do, it needs to match the email address on file. If your email address or any other information above doesn't match what is on file, you will get the following message.

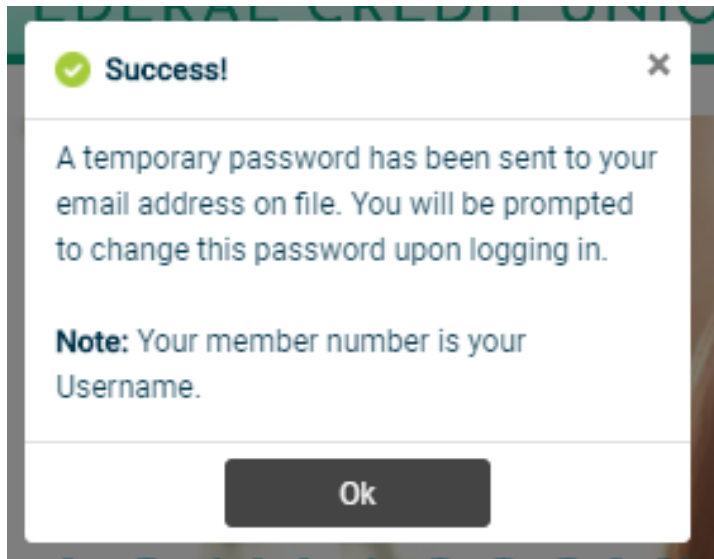


If you are certain that the information, including your email, being entered to enroll is accurate - you will need to contact the CU and have them correct the information in your Member Properties.

Home Banking Sign Up

Home Banking Walkthrough

3. If all of the information is acceptable – once you click on the “sign up” button – you will receive the following pop-up and be sent back to the front page.



The email will look like this. NOTE: If you do not receive this email, check your spam folders.



Home Banking Administrator <noreply-msdhsfcu@onlinecu.com>

Home Banking Alert

This is an alert message from the Home Banking System.

Please logon and change your password.

Thank You
System Admin

Your new password is: 6433164

Home Banking Sign Up

Home Banking Walkthrough

4. Using your member number for your temporary login Id and the temporary password sent to your email, you should log back into home banking. This will now prompt the user to update their Login Id and password.
 - a. Your new Login Id should contain at least one alphabetic character, be between 2 and 15 characters long, and cannot contain special characters.
 - b. The new password should contain Uppercase, Lowercase, Numbers and a min length of 6 Characters.

Update Password

New Login ID

Confirm New Login ID

Temp Password

New Password

Confirm Password

Home Banking Sign Up

Home Banking Walkthrough

Should your new Login ID or password not meet the Credit Unions required standards, you will get this message when you hit “Update password”

Update Password

New Login ID

Your new Login ID should contain at least one alphabetic character, be between 2 and 15 characters long, and cannot contain special characters.

Confirm New Login ID

The login IDs should match.

Password

New Password

The new password should contain Uppercase, Lowercase, Numbers and a min length of 6 Characters.

Confirm Password

The passwords should match.

Home Banking Sign Up

Home Banking Walkthrough

- You will then have to answer a series of three authentication questions and select a “confidence word”. There is a choice of different authentication questions if you select the arrow next to each question. After selecting the desired question, please input your desired answer.
 - If you log-in from another computer, the system will make you answer one of your Authentication Questions to verify who they are.
 - Confidence Word:** This is a word or phrase that will show on their log-in screen to let you know that you have come to the authentic site for Home Banking.


Security Questions

What is the name of your first pet? >

Where did you meet your spouse for the first time? >

In what year (YYYY) did you graduate from high school? >

Confidence Word



- After completing Authentication Questions, you should automatically be signed into your home banking.

